



# GAT MONTHLY MEMBERSHIP PROGRESS REPORT

Results as of: 3/31/2023

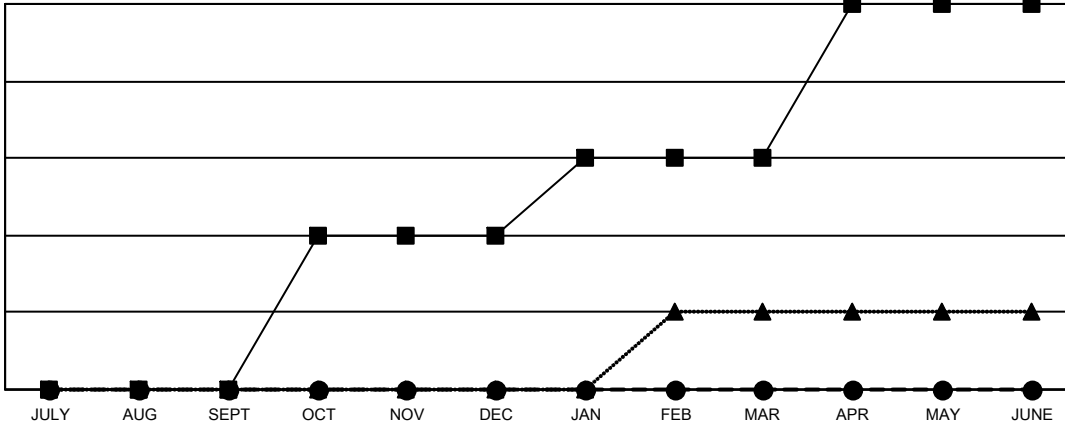
Multiple District 21

LOCATION: ARIZONA

Clubs			
RESULTS FOR 2022-2023			
QUARTER	NEW CLUB GOAL	NEW CLUBS	DROPPED CLUBS
JULY/AUG/SEPT	0	0	2
OCT/NOV/DEC	2	0	0
JAN/FEB/MAR	1	0	1
APR/MAY/JUNE	2	0	0

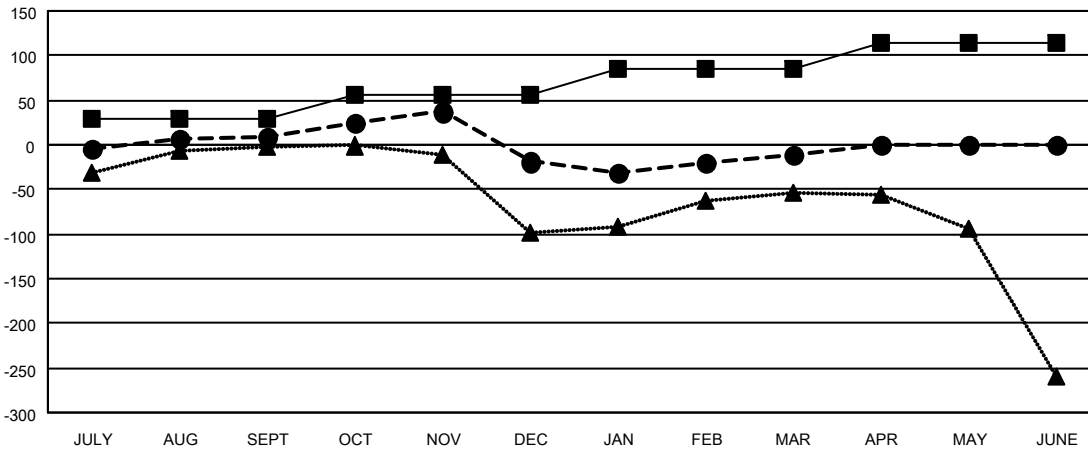
Members			
RESULTS FOR 2022-2023			
QUARTER	MEMBER GROWTH NET GOAL	MEMBER GROWTH ACTUAL	DROPPED MEMBERS ACTUAL (including transfers)
JULY/AUG/SEPT	30	87	62
OCT/NOV/DEC	25	80	99
JAN/FEB/MAR	30	97	78
APR/MAY/JUNE	30	0	0

GOALS AND ACTUAL NEW CLUBS CUMULATIVE



- CURRENT YEAR GOALS FOR NEW CLUBS
- CURRENT YEAR ACTUAL NEW CLUBS
- ▲- LAST YEAR ACTUAL NEW CLUBS

GOALS AND ACTUAL MEMBERS CUMULATIVE



- MEMBER GROWTH NET GOAL
- MEMBER GROWTH ACTUAL
- ▲- LAST YEAR MEMBERSHIP ACTUAL

<b>DROPPED CLUBS: 3</b>	59 CLUBS OF 106 ADDED 1 OR MORE NEW MEMBERS	<b>GENDER DISTRIBUTION</b>
<b>DROPPED MEMBERS</b>	<a href="#">CLICK HERE FOR CUMULATIVE MEMBERSHIP DATA</a>	MALE 1,260 (52.15%)
DECEASED 32		FEMALE 1,154 (47.76%)
CLUB CANCELLED 5		NON BINARY 0 (0.00%)
OTHER 202		PREFER NOT TO ANSWER 2 (0.08%)
<b>TOTAL 239</b>		<b>TOTAL FAMILY UNIT MEMBERS 579</b>
		<b>FAMILY MEMBERS PAYING HALF DUES 311</b>